

Summary	Census 2010	2016	2021
Population	128,026	141,456	152,652
Households	46,007	51,433	55,851
Families	34,497	38,082	41,089
Average Household Size	2.76	2.73	2.71
Owner Occupied Housing Units	36,718	39,062	42,352
Renter Occupied Housing Units	9,289	12,371	13,499
Median Age	34.5	35.6	36.4
Trends: 2016 - 2021 Annual Rate	Area	State	National
Population	1.54%	0.77%	0.84%
Households	1.66%	0.85%	0.79%
Families	1.53%	0.68%	0.72%
Owner HHs	1.63%	0.85%	0.73%
Median Household Income	2.25%	2.12%	1.86%

Households by Income	2016		2021	
	Number	Percent	Number	Percent
<\$15,000	5,740	11.2%	6,108	10.9%
\$15,000 - \$24,999	4,654	9.0%	5,427	9.7%
\$25,000 - \$34,999	5,168	10.0%	4,551	8.1%
\$35,000 - \$49,999	6,444	12.5%	5,333	9.5%
\$50,000 - \$74,999	10,066	19.6%	10,204	18.3%
\$75,000 - \$99,999	6,870	13.4%	8,750	15.7%
\$100,000 - \$149,999	8,481	16.5%	10,499	18.8%
\$150,000 - \$199,999	2,742	5.3%	3,419	6.1%
\$200,000+	1,268	2.5%	1,560	2.8%
Median Household Income	\$56,972		\$63,665	
Average Household Income	\$71,464		\$78,010	
Per Capita Income	\$26,287		\$28,823	

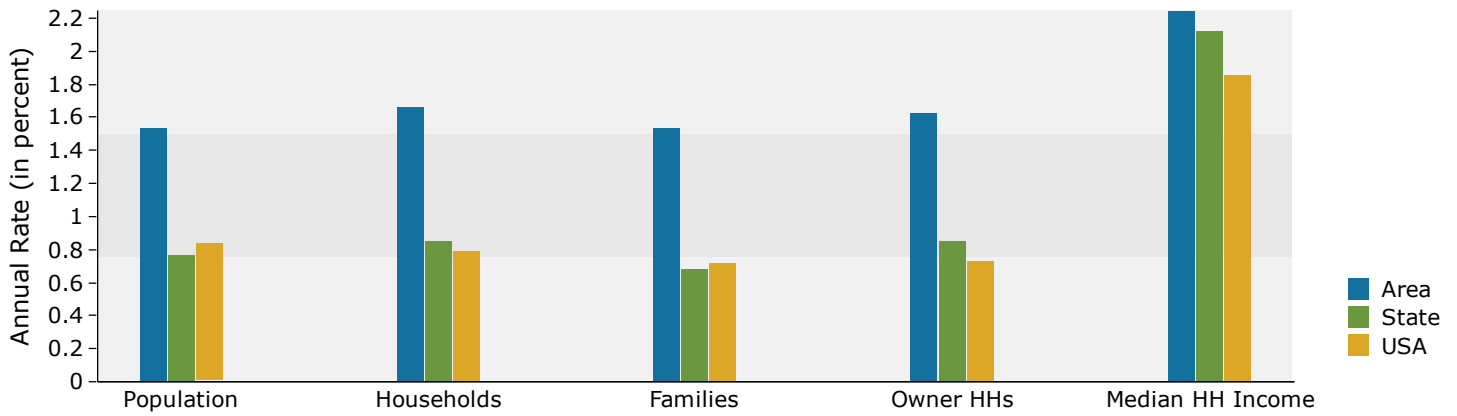
Population by Age	Census 2010		2016		2021	
	Number	Percent	Number	Percent	Number	Percent
0 - 4	9,672	7.6%	10,311	7.3%	10,889	7.1%
5 - 9	9,881	7.7%	10,413	7.4%	11,174	7.3%
10 - 14	9,922	7.7%	10,334	7.3%	11,440	7.5%
15 - 19	9,345	7.3%	9,120	6.4%	10,040	6.6%
20 - 24	7,748	6.1%	8,726	6.2%	8,005	5.2%
25 - 34	18,425	14.4%	20,599	14.6%	21,433	14.0%
35 - 44	18,475	14.4%	20,041	14.2%	22,413	14.7%
45 - 54	18,105	14.1%	18,749	13.3%	19,094	12.5%
55 - 64	13,782	10.8%	16,637	11.8%	17,923	11.7%
65 - 74	7,884	6.2%	10,838	7.7%	12,951	8.5%
75 - 84	3,722	2.9%	4,417	3.1%	5,778	3.8%
85+	1,065	0.8%	1,271	0.9%	1,512	1.0%

Race and Ethnicity	Census 2010		2016		2021	
	Number	Percent	Number	Percent	Number	Percent
White Alone	117,601	91.9%	126,454	89.4%	132,958	87.1%
Black Alone	6,505	5.1%	9,593	6.8%	12,737	8.3%
American Indian Alone	526	0.4%	671	0.5%	799	0.5%
Asian Alone	628	0.5%	918	0.6%	1,222	0.8%
Pacific Islander Alone	26	0.0%	59	0.0%	85	0.1%
Some Other Race Alone	1,273	1.0%	1,794	1.3%	2,326	1.5%
Two or More Races	1,467	1.1%	1,967	1.4%	2,525	1.7%
Hispanic Origin (Any Race)	3,801	3.0%	5,432	3.8%	7,050	4.6%

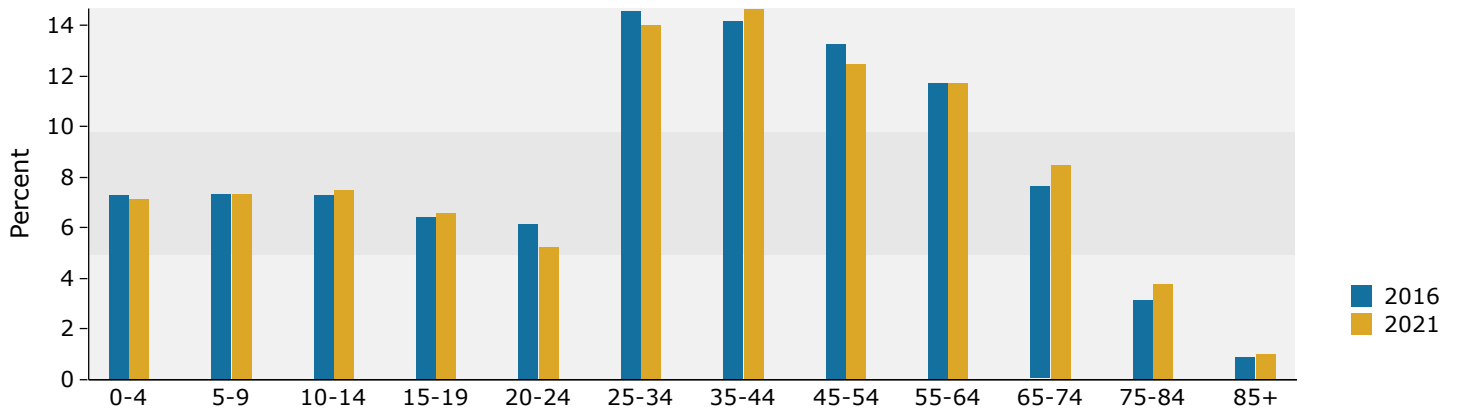
Data Note: Income is expressed in current dollars.

Source: U.S. Census Bureau, Census 2010 Summary File 1. Esri forecasts for 2016 and 2021.

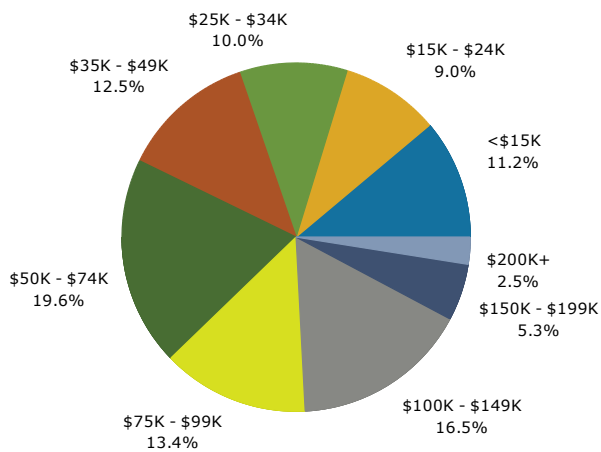
Trends 2016-2021



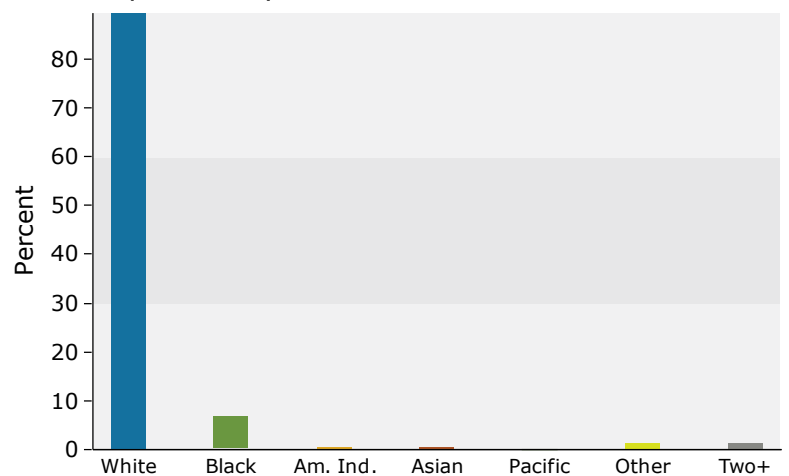
Population by Age



2016 Household Income



2016 Population by Race



2016 Percent Hispanic Origin: 3.8%

Source: U.S. Census Bureau, Census 2010 Summary File 1. Esri forecasts for 2016 and 2021.

Population Summary	
2000 Total Population	91,814
2010 Total Population	128,026
2016 Total Population	141,456
2016 Group Quarters	1,192
2020 Total Population	152,652
2016-2021 Annual Rate	1.54%
Household Summary	
2000 Households	32,630
2000 Average Household Size	2.80
2010 Households	46,007
2010 Average Household Size	2.76
2016 Households	51,433
2016 Average Household Size	2.73
2021 Households	55,851
2021 Average Household Size	2.71
2016-2021 Annual Rate	1.66%
2010 Families	34,497
2010 Average Family Size	3.16
2016 Families	38,082
2016 Average Family Size	3.15
2021 Families	41,089
2021 Average Family Size	3.14
2016-2021 Annual Rate	1.53%
Housing Unit Summary	
2000 Housing Units	36,212
Owner Occupied Housing Units	75.4%
Renter Occupied Housing Units	14.7%
Vacant Housing Units	9.9%
2010 Housing Units	50,170
Owner Occupied Housing Units	73.2%
Renter Occupied Housing Units	18.5%
Vacant Housing Units	8.3%
2016 Housing Units	56,371
Owner Occupied Housing Units	69.3%
Renter Occupied Housing Units	21.9%
Vacant Housing Units	8.8%
2021 Housing Units	61,355
Owner Occupied Housing Units	69.0%
Renter Occupied Housing Units	22.0%
Vacant Housing Units	9.0%
Median Household Income	
2016	\$56,972
2021	\$63,665
Median Home Value	
2016	\$167,984
2021	\$210,800
Per Capita Income	
2016	\$26,287
2021	\$28,823
Median Age	
2010	34.5
2016	35.6
2021	36.4

Data Note: Household population includes persons not residing in group quarters. Average Household Size is the household population divided by total households. Persons in families include the householder and persons related to the householder by birth, marriage, or adoption. Per Capita Income represents the income received by all persons aged 15 years and over divided by the total population.

Source: U.S. Census Bureau, Census 2010 Summary File 1. Esri forecasts for 2016 and 2021 Esri converted Census 2000 data into 2010 geography.

2016 Households by Income

Household Income Base	51,433
<\$15,000	11.2%
\$15,000 - \$24,999	9.0%
\$25,000 - \$34,999	10.0%
\$35,000 - \$49,999	12.5%
\$50,000 - \$74,999	19.6%
\$75,000 - \$99,999	13.4%
\$100,000 - \$149,999	16.5%
\$150,000 - \$199,999	5.3%
\$200,000+	2.5%
Average Household Income	\$71,464

2021 Households by Income

Household Income Base	55,851
<\$15,000	10.9%
\$15,000 - \$24,999	9.7%
\$25,000 - \$34,999	8.1%
\$35,000 - \$49,999	9.5%
\$50,000 - \$74,999	18.3%
\$75,000 - \$99,999	15.7%
\$100,000 - \$149,999	18.8%
\$150,000 - \$199,999	6.1%
\$200,000+	2.8%
Average Household Income	\$78,010

2016 Owner Occupied Housing Units by Value

Total	39,062
<\$50,000	14.8%
\$50,000 - \$99,999	11.4%
\$100,000 - \$149,999	15.7%
\$150,000 - \$199,999	22.5%
\$200,000 - \$249,999	14.0%
\$250,000 - \$299,999	8.8%
\$300,000 - \$399,999	6.7%
\$400,000 - \$499,999	3.7%
\$500,000 - \$749,999	1.1%
\$750,000 - \$999,999	0.9%
\$1,000,000 +	0.4%
Average Home Value	\$186,796

2021 Owner Occupied Housing Units by Value

Total	42,352
<\$50,000	7.4%
\$50,000 - \$99,999	5.9%
\$100,000 - \$149,999	12.8%
\$150,000 - \$199,999	19.6%
\$200,000 - \$249,999	19.7%
\$250,000 - \$299,999	15.3%
\$300,000 - \$399,999	10.8%
\$400,000 - \$499,999	5.1%
\$500,000 - \$749,999	1.3%
\$750,000 - \$999,999	1.4%
\$1,000,000 +	0.5%
Average Home Value	\$231,478

Data Note: Income represents the preceding year, expressed in current dollars. Household income includes wage and salary earnings, interest dividends, net rents, pensions, SSI and welfare payments, child support, and alimony.

Source: U.S. Census Bureau, Census 2010 Summary File 1. Esri forecasts for 2016 and 2021 Esri converted Census 2000 data into 2010 geography.

2010 Population by Age	
Total	128,026
0 - 4	7.6%
5 - 9	7.7%
10 - 14	7.7%
15 - 24	13.4%
25 - 34	14.4%
35 - 44	14.4%
45 - 54	14.1%
55 - 64	10.8%
65 - 74	6.2%
75 - 84	2.9%
85 +	0.8%
18 +	72.4%
2016 Population by Age	
Total	141,456
0 - 4	7.3%
5 - 9	7.4%
10 - 14	7.3%
15 - 24	12.6%
25 - 34	14.6%
35 - 44	14.2%
45 - 54	13.3%
55 - 64	11.8%
65 - 74	7.7%
75 - 84	3.1%
85 +	0.9%
18 +	74.1%
2021 Population by Age	
Total	152,652
0 - 4	7.1%
5 - 9	7.3%
10 - 14	7.5%
15 - 24	11.8%
25 - 34	14.0%
35 - 44	14.7%
45 - 54	12.5%
55 - 64	11.7%
65 - 74	8.5%
75 - 84	3.8%
85 +	1.0%
18 +	74.0%
2010 Population by Sex	
Males	63,372
Females	64,654
2016 Population by Sex	
Males	70,094
Females	71,362
2021 Population by Sex	
Males	75,728
Females	76,924

Source: U.S. Census Bureau, Census 2010 Summary File 1. Esri forecasts for 2016 and 2021 Esri converted Census 2000 data into 2010 geography.

2010 Population by Race/Ethnicity

Total	128,026
White Alone	91.9%
Black Alone	5.1%
American Indian Alone	0.4%
Asian Alone	0.5%
Pacific Islander Alone	0.0%
Some Other Race Alone	1.0%
Two or More Races	1.1%
Hispanic Origin	3.0%
Diversity Index	20.2

2016 Population by Race/Ethnicity

Total	141,456
White Alone	89.4%
Black Alone	6.8%
American Indian Alone	0.5%
Asian Alone	0.6%
Pacific Islander Alone	0.0%
Some Other Race Alone	1.3%
Two or More Races	1.4%
Hispanic Origin	3.8%
Diversity Index	25.6

2021 Population by Race/Ethnicity

Total	152,652
White Alone	87.1%
Black Alone	8.3%
American Indian Alone	0.5%
Asian Alone	0.8%
Pacific Islander Alone	0.1%
Some Other Race Alone	1.5%
Two or More Races	1.7%
Hispanic Origin	4.6%
Diversity Index	30.2

2010 Population by Relationship and Household Type

Total	128,026
In Households	99.1%
In Family Households	87.8%
Householder	26.9%
Spouse	20.0%
Child	34.9%
Other relative	3.3%
Nonrelative	2.6%
In Nonfamily Households	11.2%
In Group Quarters	0.9%
Institutionalized Population	0.7%
Noninstitutionalized Population	0.3%

Data Note: Persons of Hispanic Origin may be of any race. The Diversity Index measures the probability that two people from the same area will be from different race/ethnic groups.

Source: U.S. Census Bureau, Census 2010 Summary File 1. Esri forecasts for 2016 and 2021 Esri converted Census 2000 data into 2010 geography.

2016 Population 25+ by Educational Attainment	
Total	92,552
Less than 9th Grade	4.4%
9th - 12th Grade, No Diploma	10.6%
High School Graduate	33.2%
GED/Alternative Credential	6.7%
Some College, No Degree	21.6%
Associate Degree	5.2%
Bachelor's Degree	14.5%
Graduate/Professional Degree	3.8%
2016 Population 15+ by Marital Status	
Total	110,398
Never Married	27.0%
Married	53.4%
Widowed	5.8%
Divorced	13.8%
2016 Civilian Population 16+ in Labor Force	
Civilian Employed	94.5%
Civilian Unemployed	5.5%
2016 Employed Population 16+ by Industry	
Total	65,200
Agriculture/Mining	1.9%
Construction	14.6%
Manufacturing	9.8%
Wholesale Trade	2.3%
Retail Trade	14.8%
Transportation/Utilities	4.0%
Information	1.4%
Finance/Insurance/Real Estate	5.3%
Services	39.6%
Public Administration	6.2%
2016 Employed Population 16+ by Occupation	
Total	65,200
White Collar	54.6%
Management/Business/Financial	13.3%
Professional	16.7%
Sales	10.4%
Administrative Support	14.2%
Services	15.6%
Blue Collar	29.7%
Farming/Forestry/Fishing	0.5%
Construction/Extraction	9.8%
Installation/Maintenance/Repair	6.0%
Production	8.2%
Transportation/Material Moving	5.2%
2010 Population By Urban/ Rural Status	
Total Population	128,026
Population Inside Urbanized Area	58.9%
Population Inside Urbanized Cluster	0.0%
Rural Population	41.1%

Source: U.S. Census Bureau, Census 2010 Summary File 1. Esri forecasts for 2016 and 2021 Esri converted Census 2000 data into 2010 geography.

2010 Households by Type

Total	46,007
Households with 1 Person	20.1%
Households with 2+ People	79.9%
Family Households	75.0%
Husband-wife Families	55.7%
With Related Children	28.1%
Other Family (No Spouse Present)	19.3%
Other Family with Male Householder	6.1%
With Related Children	4.0%
Other Family with Female Householder	13.1%
With Related Children	9.0%
Nonfamily Households	4.9%

All Households with Children

41.7%

Multigenerational Households

5.0%

Unmarried Partner Households

7.1%

Male-female

6.3%

Same-sex

0.8%

2010 Households by Size

Total	46,007
1 Person Household	20.1%
2 Person Household	31.5%
3 Person Household	19.4%
4 Person Household	17.0%
5 Person Household	7.9%
6 Person Household	2.8%
7 + Person Household	1.4%

2010 Households by Tenure and Mortgage Status

Total	46,007
Owner Occupied	79.8%
Owned with a Mortgage/Loan	52.2%
Owned Free and Clear	27.6%
Renter Occupied	20.2%

2010 Housing Units By Urban/ Rural Status

Total Housing Units	50,170
Housing Units Inside Urbanized Area	57.4%
Housing Units Inside Urbanized Cluster	0.0%
Rural Housing Units	42.6%

Data Note: Households with children include any households with people under age 18, related or not. Multigenerational households are families with 3 or more parent-child relationships. Unmarried partner households are usually classified as nonfamily households unless there is another member of the household related to the householder. Multigenerational and unmarried partner households are reported only to the tract level. Esri estimated block group data, which is used to estimate polygons or non-standard geography.

Source: U.S. Census Bureau, Census 2010 Summary File 1. Esri forecasts for 2016 and 2021 Esri converted Census 2000 data into 2010 geography.

Top 3 Tapestry Segments

1.	Southern Satellites (10A)
2.	Middleburg (4C)
3.	Up and Coming Families

2016 Consumer Spending

Apparel & Services: Total \$	\$96,277,476
Average Spent	\$1,871.90
Spending Potential Index	93
Education: Total \$	\$58,777,967
Average Spent	\$1,142.81
Spending Potential Index	81
Entertainment/Recreation: Total \$	\$141,666,967
Average Spent	\$2,754.40
Spending Potential Index	94
Food at Home: Total \$	\$243,118,030
Average Spent	\$4,726.89
Spending Potential Index	95
Food Away from Home: Total \$	\$151,337,146
Average Spent	\$2,942.41
Spending Potential Index	95
Health Care: Total \$	\$261,475,666
Average Spent	\$5,083.81
Spending Potential Index	96
HH Furnishings & Equipment: Total \$	\$85,287,423
Average Spent	\$1,658.22
Spending Potential Index	94
Personal Care Products & Services: Total \$	\$34,957,804
Average Spent	\$679.68
Spending Potential Index	93
Shelter: Total \$	\$715,582,918
Average Spent	\$13,912.91
Spending Potential Index	89
Support Payments/Cash Contributions/Gifts in Kind: Total \$	\$112,597,208
Average Spent	\$2,189.20
Spending Potential Index	94
Travel: Total \$	\$84,881,432
Average Spent	\$1,650.33
Spending Potential Index	89
Vehicle Maintenance & Repairs: Total \$	\$50,362,321
Average Spent	\$979.18
Spending Potential Index	95

Data Note: Consumer spending shows the amount spent on a variety of goods and services by households that reside in the area. Expenditures are shown by broad budget categories that are not mutually exclusive. Consumer spending does not equal business revenue. Total and Average Amount Spent Per Household represent annual figures. The Spending Potential Index represents the amount spent in the area relative to a national average of 100.

Source: Consumer Spending data are derived from the 2013 and 2014 Consumer Expenditure Surveys, Bureau of Labor Statistics. Esri.

Source: U.S. Census Bureau, Census 2010 Summary File 1. Esri forecasts for 2016 and 2021 Esri converted Census 2000 data into 2010 geography.